

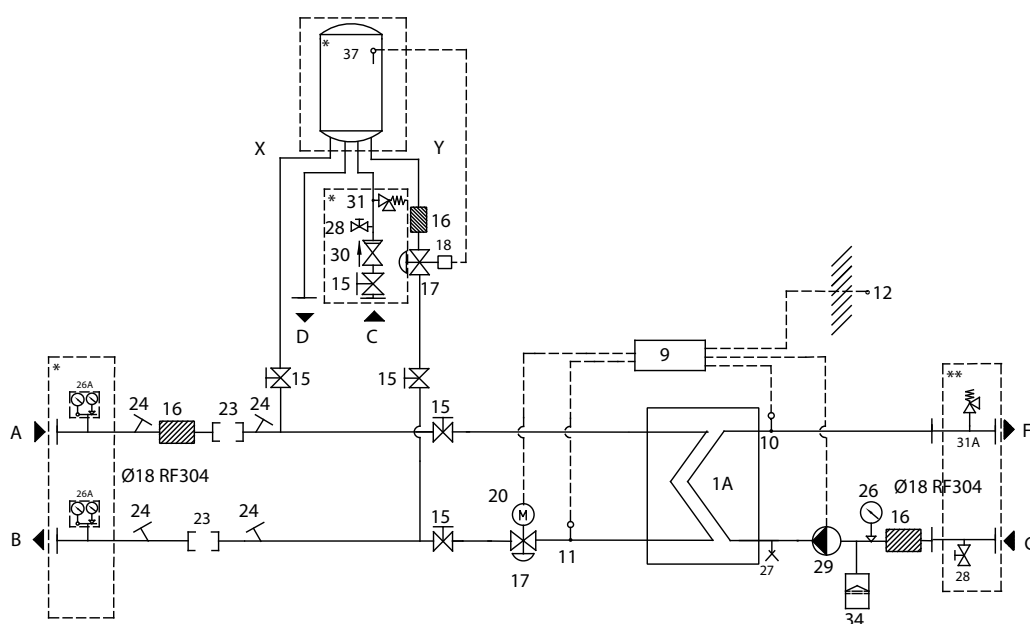
METRO System 5 gulvstillet 110

Datablad

METRO System 5 gulvstillet 110

- | | | | |
|------|--|----|------------------|
| 9: | Danfoss ECL110 | A: | Fjernvarme Frem |
| 10: | Tasseron TSB4510 | B: | Fjernvarme Retur |
| 11: | Tasseron TSB4510 | C: | Koldt brugsvand |
| 12: | Danfoss ESMT | D: | Varmt brugsvand |
| 15: | Afspærringsventil | F: | Anlæg Frem |
| 16: | Snavssamler | G: | Anlæg Retur |
| 17: | Ventil Frese Optima Compact | X: | Beholder frem |
| 17A: | Ventil Frese Optima Compact P | Y: | Beholder retur |
| 18: | Termostat Frese for Optima Compact 20-70°C | | |
| 20: | Siemens SSA331.00 | | |
| 23: | Passtykke 3/4"x110/165mm | | |
| 24: | Følerlomme 1/2" | | |
| 27: | Luftskruer 1/4" | | |
| 28*: | Bundhane | | |
| 29: | Grundfos UPM3 15-70, 130 | | |
| 30: | Kontraventil | | |
| 31*: | Sikkerhedsventil | | |
| 37*: | Beholder | | |

* Tilkøbsmulighed



Forordning EU 2017/1369	Forordning EU 812/2013
Direktiv 2009/125/EF	Forordning EU 814/2013

Varmetab iflg. Standard	-	DS/EN12897 : 2016
-------------------------	---	-------------------

Varemærke	METRO THERM A/S
-----------	-----------------

M.T. Varenummer	122522111
-----------------	-----------

Model	2252
	122522111

Energieffektivitetsklasse	A
---------------------------	----------

Stilstandstab S	30	(W)
-----------------	----	-----

Stilstandstab / Delta T	0,67	(W / K)
-------------------------	------	---------

Vandindhold	94	(l)
-------------	----	-----